

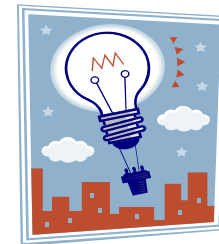
Please join us for ...

*Building Bridges: Easing the Transition from
Preschool to Kindergarten*

*A Good Ideas Conference
For Teachers,
By Teachers*

*Sponsored by the Learning Resource Center– South,
supported by I.D.E.A., 2004 Part B and
administered by the New Jersey Department of Education,
Office of Special Education Programs*

JULY 10, 2008



*The
National Conference Center
at the
Holiday Inn
East Windsor, NJ*

For Teachers, By Teachers Conference
Learning Resource Center - South at ELRC
606 Delsea Drive
Sewell, NJ 08080
856-582-7000 extension 159



A Good Ideas Conference—July 10, 2008

Building Bridges: Easing the Transition from Preschool to Kindergarten

Addressing the Needs of Preschool Students with Disabilities Within General Education Preschool Settings

Keynote Presentation

A Panel Discussion The Journey of Transition: A Teacher's Perspective

Dr. Janis Strasser and a panel of kindergarten teachers from urban and suburban districts will discuss what preschool teachers need to know about how to get all preschool children, including preschool children with disabilities, and their families ready for an inclusive kindergarten classroom. What does a typical day in an inclusive kindergarten look like? What are the challenges for all children as they enter kindergarten? How can preschool teachers implement a developmentally appropriate curricula, continue to support learning through play, and yet ease transition into kindergarten?



Registration Form

COST: \$55.00 includes coffee & danish, lunch & materials
You will be attending **two (2)** presentations:
one in the morning and one in the afternoon.
Please indicate your choices below.

You **MUST** choose an alternate due to limited seating.
**REGISTRATIONS ARE TAKEN ON A FIRST COME,
FIRST SERVED BASIS BY MAIL OR FAX.**
No refunds after DEADLINE—July 3, 2008.

CHOICE #	WORKSHOP TITLE
1.	Literacy Across the Curriculum: Preparing Preschool Children for Kindergarten (A.M. Only)
2.	How to Support Children's Mathematical Learning in Preschool (P.M. Only)
3.	Creating a Symbol/Print Rich Environment to Enhance Communication (A.M. & P.M.)
4.	Taking Play Seriously (A.M. & P.M.)
5.	Year-Round Gross Motor Activities (A.M. & P.M.)

A.M. CHOICE #	P.M. CHOICE #	ALTERNATE #

Name: _____

Home Address: _____

City: _____ State & Zip: _____

County: _____

Home Phone: _____ Work Phone: _____

Position & District: _____

Special Needs: (e.g., Interpreter for hearing impaired w/3 weeks notice) _____

Registration DEADLINE—July 3, 2008.

Return completed form to:

Diane Lehnowsky, Learning Resource Center— South

606 Delsea Drive, Sewell, NJ 08080

Fax: 856-582-4323

Phone: 856-582-7000 extension 159

Please make checks / POs payable to EIRC/LRC Preschool

Directions

**The National Conference Center
at the Holiday Inn
399 Monmouth Street
East Windsor, NJ 08520
609-443-8000**

From the NJ Turnpike—North or South: Take Exit 8, bear right after the toll towards Freehold/Twin Rivers (*Rt. 33 East*). Immediately get into left lane and make left turn at first traffic light (*Woodside Ave.*). The left turn is less than 1/4 mile from the exit ramp. The hotel will be directly in front of you.

From Princeton, Rt. 1 & Vicinity (via Rt. 571 East): Take Rt. 571 East (*Princeton-Hightstown Rd.*) to Rt. 133 East to end. Make a right at traffic light (Rt. 33), get into right lane immediately and make right at first traffic light (*Woodside Ave.*). The hotel will be directly in front of you.

From Freehold/Points East: From Route 9, the Garden State Parkway, or Rt. 537, pick up Rt. 33 West, follow into East Windsor/Twin Rivers. Bear right onto *Woodside Ave.*, which turns into Monmouth St. Hotel is just ahead on the right.

From Central New Jersey (via Rt. 206 South): Take Rt. 206 South to Rt. 287 South to NJ Turnpike South and follow directions from NJ Turnpike above. Alternatively, take Rt. 206 South to Nassau St. exit in Princeton. Turn left onto Nassau St. Then turn right onto *Washington Rd.*, which becomes Rt. 571 East. Follow directions above from Princeton.

From Philadelphia Area: If using the NJ Turnpike, see directions above. Otherwise, take 95/295 to Rt. 1 North to Princeton and follow directions above.

From North Brunswick Area (via Rt. 130 South): Take 130 South to Hightstown Circle. Turn left at sign for *Hightstown & Shore Points*. Follow about 1 mile, then turn left onto Monmouth St. (Rt. 633). Hotel is ahead 1 mile on the left.

From Bordentown Area (via Rt. 130 North): Take Rt. 130 North to Rt. 33 East into Hightstown. Pass through 3 lights. After 3rd light, make the first right onto Monmouth St. Hotel is about 1 mile ahead on the left.

AGENDA

**8:30—9:15 A.M.
Registration/Refreshments**

**9:15—10:30 A.M.
Opening Remarks & Keynote**

**10:45—12:15 P.M.
Morning Presentations**

**12:15—1:15 P.M.
Lunch**

**1:15—2:30 P.M.
Afternoon Presentations**

You will be receiving Professional Development hours upon completion of this conference. You may pick up your certificate when you hand in your conference evaluation sheet

Workshop Selections

Workshop 1 (A.M. Only)

Literacy Across the Curriculum: Preparing Preschool Children for Kindergarten

This session will explore how preschool teachers can use literacy experiences to help preschool children with disabilities make meaningful connections across content areas. Participants will engage in activities to help you identify literacy opportunities, enrich centers or interest areas, think about family connections, and plan for assessment. Participants will examine children's picture books that focus on content or concepts in math, science, and social studies in ways that are exciting for the preschool child. Participants will learn how to create literacy experiences involving music, the arts, dramatic play, and reading and writing activities for preschoolers. These types of experiences can help prepare children for kindergarten in developmentally appropriate ways.

Audience: Special & general education preschool teachers, child study team members, related service providers, administrators

Workshop 2 (P.M. Only)

How to Support Children's Mathematical Learning in Preschool

Participants will gain an understanding of children's mathematical development of mathematical concepts and develop strategies to enhance instructional skills in this domain. Hands-on activities to support children's learning will be provided with attention to problem solving, connections, reasoning, representation and communication for preschool children with disabilities.

Audience: Special & general education preschool teachers, child study team members, related service providers, administrators

Workshop 3 (A.M. & P.M.)

Creating a Symbol/Print Rich Environment to Enhance Communications and Literacy Skills

This workshop will explore the use of symbols and printed materials in order to facilitate communication of young children with disabilities and promote emergent literacy skills in a preschool setting. Strategies and activities to create a print rich and language rich classroom environment will be discussed.

Audience: Special & general education preschool teachers, child study team members, related service providers, administrators

Workshop Selections

Workshop 4 (A.M. & P.M.)

Taking Play Seriously

Play is an integral part of the way all young children grow and develop which is why in a developmentally appropriate inclusive classroom we make play the central learning experience in a young child's day. Unfortunately, there are some children with disabilities who do not engage in quality play, either with materials or with peers. This workshop will assist classroom teachers in designing interventions that are aligned to the Preschool Teaching and Learning Expectations and are designed to assist young children with disabilities to increase social and academic skills through play.

Audience: Special & general education preschool teachers, child study team members, related service providers, administrators

Workshop 5 (A.M. & P.M.)

Year-Round Gross Motor Activities

Through daily indoor and outdoor play activities, preschool teachers provide a wide range of concrete, developmentally appropriate experiences that assist all children, including young children with disabilities in the development of gross motor skills. This workshop will assist classroom teachers in creating interesting and appropriate indoor as well as outdoor gross motor activities for all children. Additionally, an introduction to the UMDNJ/Special Olympics New Jersey Young Athlete Program will be provided.

Audience: Special & general education preschool teachers, child study team members, related service providers, administrators

